

Returning to Nursery



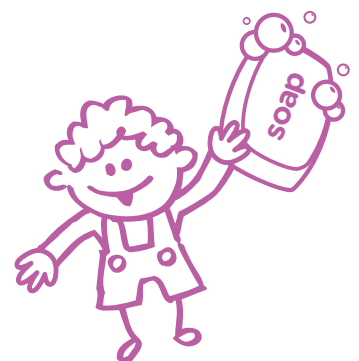
We are looking forward to welcoming you back from 1st June 2020 and want to tell you a little more about what we are doing to keep our families and staff safe.

We know this is an anxious time for everyone but our new operating procedures, which have been based on Government Guidance, and our own additional measures, have been implemented to ensure we are able to still provide the highest level of care, education and emotional support to our children, whilst minimising the risk of infection for everyone. Safety remains our priority and we will ensure that each and every one of our children is supported in a way which meets their own individual needs.

* Links to the full Government guidance can be found at the end of page 2, but we hope this short summary will provide you with an overview of how Nursery will be different when you return.

Why can more children go to Nursery?

- The Government has asked all early years settings to prepare to open on 1st June 2020.
- As a result of the huge efforts everyone has made over the past 8 weeks, the transmission rate of Coronavirus has decreased.
- It is good for children's mental wellbeing.
- It is good for children to socialise.
- Nursery is a good place for them to play and learn.



How are we making sure Nursery is safe for everyone?

- We have robust and detailed health, hygiene and safety protocols in place.
- Everyone will wash their hands regularly.
- If a child, family member, or staff member is sick, they cannot come to Nursery.
- Nursery will be cleaned regularly throughout the day.
- We are working in small groups of children which will minimise contact and mixing.
- Supporting children in an age appropriate way to understand how they can keep themselves safe, like regular handwashing and sneezing into a tissue.

To do this we will need to make some changes, so what will be different about Nursery when you come back?

- How you drop off and pick up your child, for example, you might use a different exit or entry to normal, there may be allocated times for attendance and you may have to wait a little longer to come into the Nursery.
- Your child may be based in a different room, or have a different Key Person or Buddy.
- Children will play and learn in small groups. They may not be able to have all of their usual toys available if these are not easily washable.
- We will change how we serve lunch and there will be some temporary changes to the menu, including serving cold teas.
- There will be no outings outside the Nursery premises, or external educational visitors.
- Parents will not be able enter the Nursery except for bespoke settling in needs which will be managed in line with all guidance.
- We will carry out Nursery visits for new parents when the Nursery is not occupied.
- There will be limited or no car parking facilities available.
- You will not be able to leave your buggy or pushchair at Nursery for the foreseeable future.

How will we settle children back into Nursery and ensure their wellbeing is looked after?

- The Nursery Manager will work with you to agree a plan which will support your child's return to, or start, at Nursery in a way which meets their own individual needs, whilst adhering to social distancing measures.
- Our staff will still provide cuddles and comfort to children in their small groups.
- We will support children's understanding of why their world is currently different with a range of age-appropriate learning opportunities.

Will my child or the staff be tested?

Testing without symptoms is not currently available but anyone attending or working in a Nursery is now eligible for a test if they display symptoms. We will continue to follow all Government advice in this regard.

What if there is a case of Coronavirus at Nursery?

There have been extremely low rates of infection in nurseries who have remained open for Key Workers but if there is a suspected case:

- Parents will be contacted immediately, and the child will be isolated from other children with one member of staff who will wear PPE whilst caring for the child.
- The child or staff member with symptoms must self isolate for 7 days and apply for a test.
- The people who the child or staff member lives with must self isolate for 14 days.
- Where a child or staff member tests positive, the rest of their group will be sent home and advised to self-isolate for 14 days and follow the 'Stay at home: guidance for households with possible coronavirus. Other household members of the wider group do not need to self-isolate unless the child or staff member they live with develops symptoms.

Opening schools and educational settings to more pupils from 1 June: guidance for parents and carers
<https://tinyurl.com/yd582d2l>

Coronavirus (COVID-19): implementing protective measures in education and childcare settings
<https://tinyurl.com/y97fmcjc>

Safe working in education, childcare and children's social care settings, including the use of personal protective equipment (PPE)
<https://tinyurl.com/y6w5wlxx>